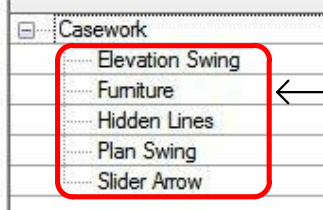


RevitWorks Casework Specifications

v3 Feature added in version 3 (v3)

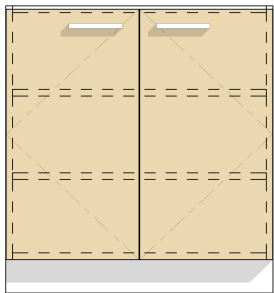
Object Styles Used



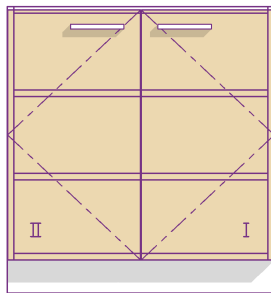
← Handles are under this sub-category

Casework - "Side I" and "Side II" Parameters

Normal Elevation View

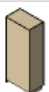



Hover mouse over casework unit - side indicators appear



Typical Instance Parameters - Cupboards, Drawers and Combined Units

Properties

 CW Cupbd
UB 860h x 600d - 1 Door - 2 Shelves

Casework (1)  Edit Type

Constraints

Length 440.0
Offset 0.0
Work Plane Level : LEVEL 02

Construction

Side II Kickplate Flush ☒
Side II End Panel Extend Back ☐
Side II End Panel ☒
Side II Divider Panel ☐
Side I Kickplate Flush ☒
Side I End Panel Extend Back ☐
Side I End Panel ☒
Side I Divider Panel ☐

Materials and Finishes

Front Panel Finish <By Category>
End Panel Side II Finish <By Category>
End Panel Side I Finish <By Category>

Dimensions

Width 440.0
Carcase Offset off Wall 0.0

Identity Data

Comments

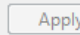
Mark

Phasing

Phase Created New Construction
Phase Demolished None

Other

Side II Shadow Margin 0.0
Side I Shadow Margin 0.0

[Properties help](#) 



Content that works

www.revitworks.com

RevitWorks Casework Specifications



Cupboard Type Parameters

- : Overhead Cupboards similar but with no kickplate parameters
- : Corner Cupboards similar but with additional Length parameters to suit application.

Type Properties

Family: CW Cupbd Load...

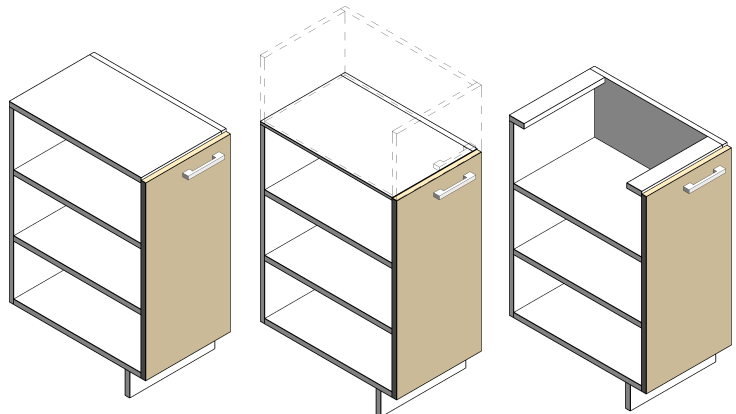
Type: UB 860h x 600d - 2 Doors - 1 Shelf Duplicate... Rename...

Type Parameters

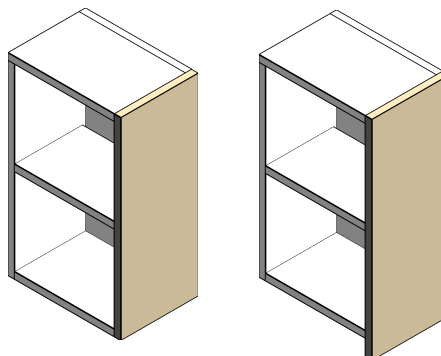
Parameter	Value
Constraints	
Panel Side Tolerance	1.0
Carcase Thickness	20.0
Carcase Back Thickness	20.0
Construction	
Overlay Panel	<input checked="" type="checkbox"/>
Inset Panel	<input type="checkbox"/>
Double Panel	<input checked="" type="checkbox"/>
Single Panel	<input type="checkbox"/>
No Front Panel	<input type="checkbox"/>
NO OF SHELVES	1
Adjustable Shelves	<input checked="" type="checkbox"/>
NO OF RAILS	0
Top Full Panel	<input type="checkbox"/>
Top Divider Panel	<input type="checkbox"/>
Top Panel as Rails	<input checked="" type="checkbox"/>
No Top Panel	<input type="checkbox"/>
No Kickplate	<input type="checkbox"/>
Base Full Panel	<input checked="" type="checkbox"/>
Base Divider Panel	<input type="checkbox"/>
No Base Panel	<input type="checkbox"/>
Side I End Panel Extend Down	<input type="checkbox"/>
Side II End Panel Extend Down	<input type="checkbox"/>
Handle Horizontal	<input checked="" type="checkbox"/>
Handle Vertical	<input type="checkbox"/>
Handle Centred on Panel Width	<input type="checkbox"/>
Construction Type	Underbench
Graphics	
Top Hung Panel	<input type="checkbox"/>
Sliding Panel	<input type="checkbox"/>
Slider Arrow Offset off Panel Base	200.0
Side Swing Panel	<input checked="" type="checkbox"/>
Fixed Panel	<input type="checkbox"/>
Bifold Panel	<input type="checkbox"/>
Swing Angle	0.000°
Materials and Finishes	
Shelf Material	<By Category>
Rail Material	<By Category>
Kickplate Material	<By Category>
Furniture Material	<By Category>
Front Panel Material	<By Category>
Carcase Material	<By Category>
Finish	
Dimensions	
Carcase Offset off Base	100.0
Front Panel Thickness	20.0
Carcase Depth	580.0
Carcase Height	760.0
Height	860.0
Depth	600.0
Identity Data	
Other	
Top Rail Width	65.0
Panel Top Tolerance	10.0
Panel Base Extension	0.0
First Rail Height	0.0
Second Rail Height	0.0
Handle Offset off Panel Top	50.0
Handle Offset off Side	50.0
Handle Height off Base	800.0
Bottom Shelf Height	180.0
Shelf to Shelf Height	200.0
Shelf Thickness	20.0
Kickplate Setback	50.0

<< Preview OK Cancel Apply

"Family Wide" Parameters. Edit family to change.



Handle materials are linked through to this material



Measured to middle of shelf thickness

Content that works

www.revitworks.com

RevitWorks Casework Specifications



Drawer Type Parameters

v3 : "Drawer Bank" similar but with no "Specified Top Drawer Height" parameters and additional height parameters as shown below in "Variations"

Type Properties

Family: CW Drawers Load...

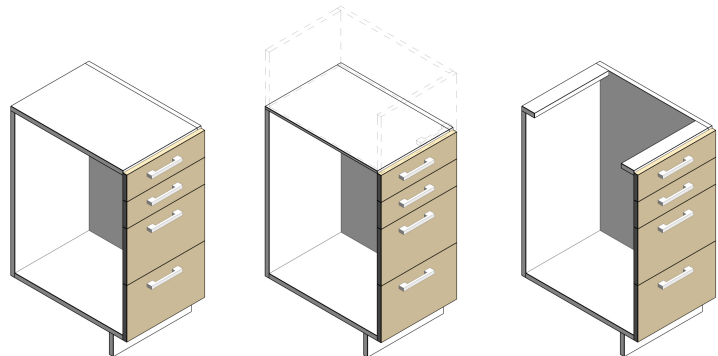
Type: UB 860h x 600d - 3 Drawers Top Two Duplicate... Rename...

Type Parameters

Parameter	Value
Constraints	
Panel Side Tolerance	1.0
Carcase Thickness	20.0
Carcase Back Thickness	20.0
Construction	
Overlay Panel	<input checked="" type="checkbox"/>
Inset Panel	<input type="checkbox"/>
NO OF DRAWERS	3
Specify Top Two Drawer Height	<input checked="" type="checkbox"/>
Specify Top Drawer Height	<input type="checkbox"/>
All Drawers Equal	<input type="checkbox"/>
Specified Top Drawer Heights	150.0
Top Full Panel	<input type="checkbox"/>
Top Divider Panel	<input type="checkbox"/>
Top Panel as Rails	<input type="checkbox"/>
No Top Panel	<input checked="" type="checkbox"/>
No Kickplate	<input type="checkbox"/>
Side I End Panel Extend Down	<input checked="" type="checkbox"/>
Side II End Panel Extend Down	<input checked="" type="checkbox"/>
Base Full Panel	<input checked="" type="checkbox"/>
Base Divider Panel	<input type="checkbox"/>
No Base Panel	<input type="checkbox"/>
Handle Horizontal	<input checked="" type="checkbox"/>
Handle Vertical	<input type="checkbox"/>
Construction Type	Underbench
Materials and Finishes	
Kickplate Material	<By Category>
Furniture Material	<By Category>
Front Panel Material	<By Category>
Carcase Material	<By Category>
Finish	
Dimensions	
Carcase Offset off Base	100.0
Front Panel Thickness	20.0
Carcase Depth	580.0
Carcase Height	760.0
Height	860.0
Depth	600.0
Identity Data	
Other	
Top Rail Width	65.0
Top Panels Margin	10.0
Panel Top Tolerance	1.0
Kickplate Setback	50.0
Handle Offset off Panel Top	50.0

<< Preview OK Cancel Apply

"Family Wide" Parameters. Edit family to change.



Handle materials are linked through to this material

v3 Variations to "Drawer Bank"

Other

Top Rail Width	65.0
Panel Top Tolerance	1.0
ALL DRAWERS EQUAL	<input checked="" type="checkbox"/>
Equal Drawers Top Panel Margin	10.0
Equal Drawer Height	106.3
Drawer 1 Specified Height	0.0
Drawer 2 Specified Height	0.0
Drawer 3 Specified Height	0.0
Drawer 4 Specified Height	0.0
Drawer 5 Specified Height	0.0
Drawer 6 Specified Height	0.0
Drawer 7 Specified Height	0.0
Drawer 8 Specified Height	0.0
Drawer Handle Offset off Panel Top	50.0
Kickplate Setback	50.0

<< Preview OK Cancel Apply

Combined Cupboard Type Parameters

Parameters as per Cupboards and Drawer units + more to suit and all heights are manually entered (refer below).

Type Properties

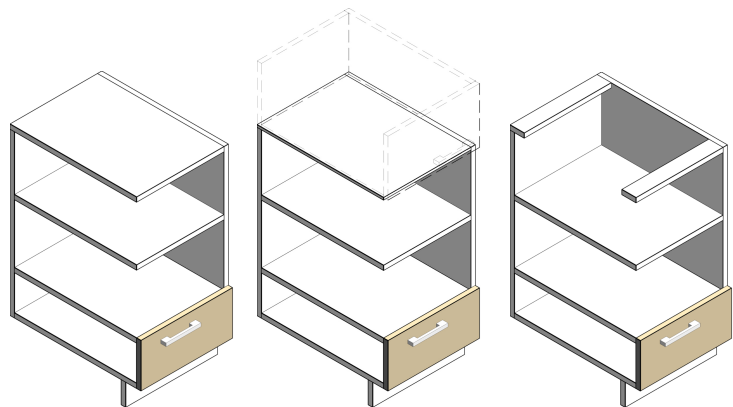
Family: CW Cupbd Combined Load...

Type: Robe 2400h x 600d - 4 Doors - 1 rail Duplicate... Rename...

Type Parameters

Parameter	Value
Constraints	
Panel Side Tolerance	1.0
Carcase Thickness	20.0
Carcase Back Thickness	20.0
Construction	
Overlay Panel	<input checked="" type="checkbox"/>
Inset Panel	<input type="checkbox"/>
ONE CUPBOARD	<input type="checkbox"/>
TWO CUPBOARDS	<input checked="" type="checkbox"/>
Cupboard 1 Single Panel	<input type="checkbox"/>
Cupboard 1 Double Panel	<input checked="" type="checkbox"/>
Cupboard 1 Handle Vertical	<input checked="" type="checkbox"/>
Cupboard 1 Handle Horizontal	<input type="checkbox"/>
Cupboard 1 Handle Centred on	<input type="checkbox"/>
Cupboard 2 Single Panel	<input type="checkbox"/>
Cupboard 2 Double Panel	<input checked="" type="checkbox"/>
Cupboard 2 Handle Vertical	<input type="checkbox"/>
Cupboard 2 Handle Horizontal	<input checked="" type="checkbox"/>
Cupboard 2 Handle Centred on	<input type="checkbox"/>
NO OF DRAWERS	1
Drawer 1 Single	<input checked="" type="checkbox"/>
Drawer 1 Side by Side	<input type="checkbox"/>
Drawer 2 Single	<input checked="" type="checkbox"/>
Drawer 2 Side by Side	<input type="checkbox"/>
Drawer Handles Vertical	<input type="checkbox"/>
Drawer Handles Horizontal	<input checked="" type="checkbox"/>
NO OF SHELVES	2
Shelf 1 Adjustable	<input type="checkbox"/>
Shelf 2 Adjustable	<input type="checkbox"/>
Shelf 3 Adjustable	<input type="checkbox"/>
Shelf 4 Adjustable	<input type="checkbox"/>
Shelf 5 Adjustable	<input type="checkbox"/>
Shelf 6 Adjustable	<input type="checkbox"/>
NO OF RAILS	1
Top Full Panel	<input checked="" type="checkbox"/>
Top Divider Panel	<input type="checkbox"/>
Top Panel as Rails	<input type="checkbox"/>
No Top Panel	<input type="checkbox"/>
No Kickplate	<input type="checkbox"/>
Base Full Panel	<input checked="" type="checkbox"/>
Base Divider Panel	<input type="checkbox"/>
No Base Panel	<input type="checkbox"/>
Side I End Panel Extend Down	<input type="checkbox"/>
Side II End Panel Extend Down	<input type="checkbox"/>
Construction Type	Robe
Graphics	
Cupboard 1 Top Hung Panel	<input type="checkbox"/>
Cupboard 1 Side Swing Panel	<input checked="" type="checkbox"/>
Cupboard 1 Bifold Panel	<input type="checkbox"/>
Cupboard 1 Swing Angle	30.000°
Cupboard 1 Fixed Panel	<input type="checkbox"/>
Cupboard 1 Sliding Panel	<input type="checkbox"/>
Cupboard 1 Slider Arrow Offset	200.0
Cupboard 2 Top Hung Panel	<input type="checkbox"/>
Cupboard 2 Side Swing Panel	<input checked="" type="checkbox"/>
Cupboard 2 Bifold Panel	<input type="checkbox"/>
Cupboard 2 Swing Angle	0.000°
Cupboard 2 Fixed Panel	<input type="checkbox"/>
Cupboard 2 Sliding Panel	<input type="checkbox"/>
Cupboard 2 Slider Arrow Offset	200.0
Materials and Finishes	
Rail Material	<By Category>
Shelf Material	<By Category>
Furniture Material	<By Category>
Front Panel Material	<By Category>
Kickplate Material	<By Category>
Carcase Material	<By Category>
Finish	<By Category>

"Family Wide"
Parameters. Edit family to
change.



Handle materials are linked through
to this material

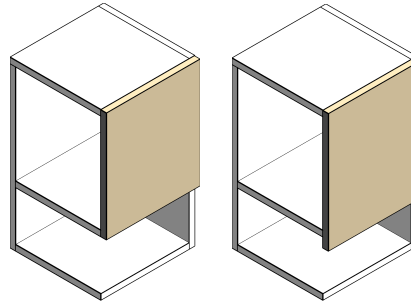
RevitWorks Casework Specifications

Combined Cupboard Type Parameters (continued)

Dimensions	
Carcase Offset off Base	100.0
Front Panel Thickness	20.0
Carcase Depth	580.0
Carcase Height	2300.0
Height	2400.0
Depth	600.0

Identity Data	
Other	
Top Rail Width	65.0
Panel Top Tolerance	0.0
Cupboard 1 Offset off Carcase Base	300.0
Cupboard 1 Height	1500.0
Cupboard 1 Handle Offset off Panel Base	500.0
Cupboard 1 Handle Offset off Panel Top	1000.0
Cupboard 1 Panel Base Extension	0.0
Cupboard 2 Offset off Carcase Base	1800.0
Cupboard 2 Height	500.0
Cupboard 2 Handle Offset off Panel Base	50.0
Cupboard 2 Handle Offset off Panel Top	450.0
Cupboard 2 Panel Base Extension	0.0
Cupboard Handle Offset off Side	50.0
First Drawer Offset off Carcase Base	0.0
Drawer 1 Height	300.0
Drawer 2 Height	0.0
Drawer 3 Height	0.0
Drawer 4 Height	0.0
Drawer Handle Offset off Panel Top	50.0
Shelf Thickness	20.0
Shelf 1 Offset off Carcase Base	300.0
Shelf 2 Offset off Carcase Base	1800.0
Shelf 3 Offset off Carcase Base	0.0
Shelf 4 Offset off Carcase Base	0.0
Shelf 5 Offset off Carcase Base	0.0
Shelf 6 Offset off Carcase Base	0.0
Rail 1 Height off Carcase Base	1650.0
Rail 2 Height off Carcase Base	0.0
Kickplate Setback	50.0

<< Preview OK Cancel Apply



Measured to middle of shelf thickness

Shelves and Rails Type Parameters

Family: CW Shelves & Rails Load...

Type: Shelf Rail Duplicate... Rename...

Parameter	Value
Construction	
NO OF SHELVES	1
NO OF RAILS	1
Construction Type	Overhead
Materials and Finishes	
Shelf Material	<By Category>
Rail Material	<By Category>
Finish	
Dimensions	
Shelf Depth	350.0
Rail Offset	280.0
Height	0.0
Depth	0.0
Identity Data	
Other	
First Rail Height	1550.0
Second Rail Height	2000.0
Shelf to Shelf Height	300.0
Shelf Thickness	20.0
Bottom Shelf Height	1700.0

<< Preview OK Cancel Apply

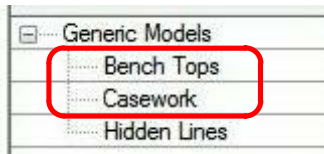
Measured to middle of shelf thickness

RevitWorks Casework Specifications

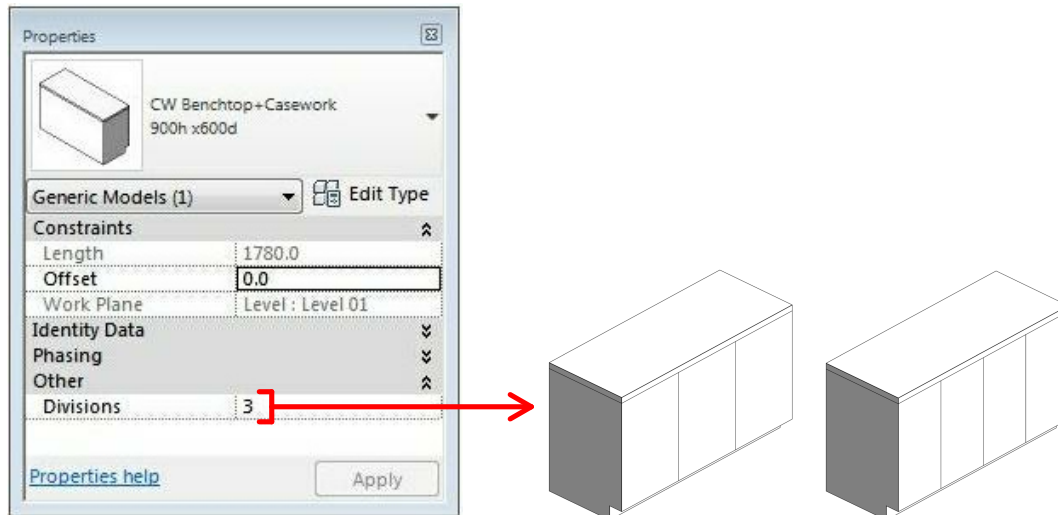


Generic Units Object Styles Used

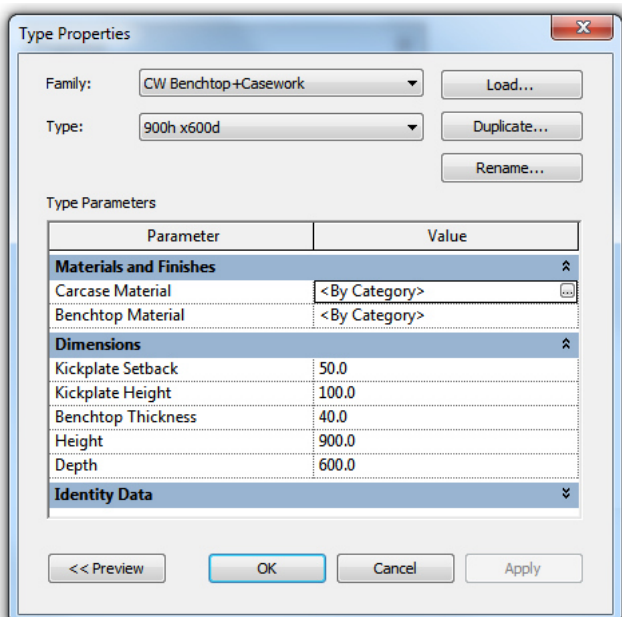
"Generic Models" so they can be joined and cut with sinks etc.



Instance Parameters - Benchtop+Casework



Type Parameters - Benchtop+Casework



Type Parameters - Benchtop

